

Club Car

# HONOR THE GAME.



**TURF UTILITY VEHICLES**

**IR** Ingersoll Rand





# THE ULTIMATE TEAM PLAYER.

It takes teamwork to assure that your guests have a great day on your course. That's why you need Club Car on your side. With your success in mind, we offer a simple strategy: Build the industry's most reliable vehicles. Lead the way in product innovation. And provide you with a full range of creative business solutions. The result? More than 50 years of successful partnerships with our customers around the globe. Together, we're working to ensure that our sport will grow and continue to thrive in the years to come. In fact, the people of Club Car are committed to a special vision: to honor the game in every way. That's why we've chosen to build partnerships with organizations that truly care about the game. That's why we're driven to build the industry's finest vehicles. And that's why, supported by a full range of creative business solutions, we're focused on helping our customers find success. Club Car is committed to you — and your investment. We'll prove it every day with an intimate understanding of the issues and challenges you face. And we'll find solutions that will make a real difference for you and your customers. To us, golf is much more than simply our business. At the end of the day, it's all about making each and every golf experience a memorable one. Club Car is honored to be a part of this great game. We look forward to a rewarding future with you as our partner. **To learn more about our reliable turf utility vehicles, and how they can help in the success of your operation, call 1.800.CLUBCAR or visit [www.clubcar.com](http://www.clubcar.com).**

# COMMITTED TO YOUR BUSINESS. ONE INNOVATION AT A TIME.

As the industry's innovation leader, Club Car is proud to unveil technologies, features and advancements that others can't begin to replicate. Our goal is to meet the needs of our customers by building the most innovative, reliable and cost-effective turf utility vehicles on the market.

Here's how we're leading the way in the turf utility vehicle market:

- We offer the exclusive IQ Plus System,<sup>™</sup> the latest advancement in electric drive train technology. Designed to utilize the established 48-volt platform batteries and improve performance of the vehicle, IQ Plus gives electric-powered vehicles longer range, increased top speeds, better hill-climbing ability and improved diagnostics. But more importantly, vehicles with the IQ Plus System are able to handle most any job required on a golf course without being heard. So now, you can get more work done without disrupting your guests.
- We utilize lightweight aluminum frames on our turf utility products. Exclusive to Club Car, this aluminum frame is three times stronger than comparable steel frames. And since our frames are rustproof and corrosion-resistant, your Carryall Turf vehicle will keep working hard for years to come. The lightweight construction also helps enhance battery lifespan, minimizing your maintenance costs.

And for heavy-duty applications like golf course development and construction, our Carryall line features advancements like:

- Our revolutionary IntelliTrak<sup>™</sup> 4-wheel drive system, available on the Carryall 295, 295 SE and 295 with IntelliTach, constantly senses the driving environment and instantly engages and disengages 4-wheel drive operation as the surroundings change. Because there's nothing to engage, shift or lock, you get a 4x4 that's easy for your staff members to drive.
- The IntelliTach<sup>™</sup> quick-change attachment system gives you unprecedented versatility with five easy-to-use attachments. Whether you need a set of forks, a bucket, a mower, a blade or a broom, IntelliTach immediately expands your capabilities. Featured on our Carryall 295 with IntelliTach turf utility vehicle, it eliminates the need for multiple vehicles. That keeps your operational costs down.

Please Note: Vehicles contained throughout this brochure may be shown with additional accessories.









9.1 cu. ft. Cargo Box

## MULTI-TASKING MADE SIMPLE.

For light-duty jobs around your operation, nothing beats the energetic Carryall Turf 1. It's a versatile, multi-tasking machine — with the ability to out-manuever every other turf utility vehicle on the market. Navigate your course with ease in your choice of an electric drive train with Club Car's exclusive IQ System, or a gasoline model. And with our rugged, rustproof aluminum frame — up to three times stronger than comparable steel frames — you've got a vehicle that's built for the long haul.

The Carryall Turf 1. Multi-tasking has never been so easy.

- 351 cc, 11.5 hp @ 3600 rpm, Gasoline, Pedal-Start Engine or 48-Volt Electric (Exceeds SAE J1940 Performance Standards.)
- 800 lb. Total Vehicle Load
- Cargo Box – 9.1 cubic feet
- 15 mph (Maximum Speed)
- Heavy-Duty Front Bumper
- Cargo Box Bed with Flip-Down Tailgate
- Molded, Seamless Vinyl Seats
- Self-Adjusting Rack & Pinion Steering
- Heavy-Duty Unitized Powertrain

Trailer Hitch

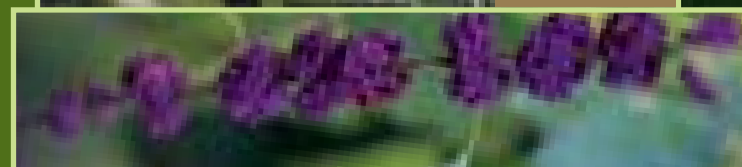
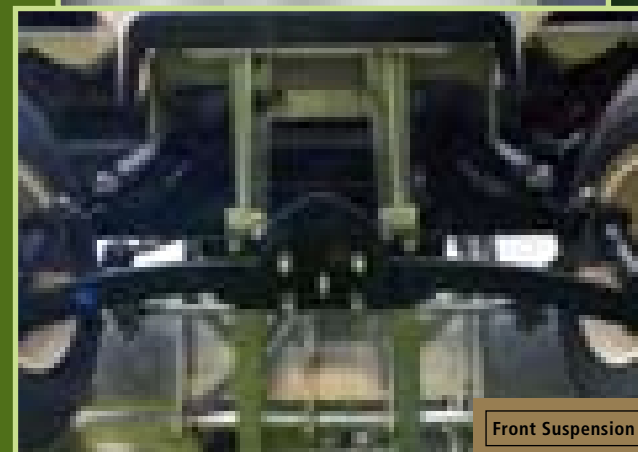
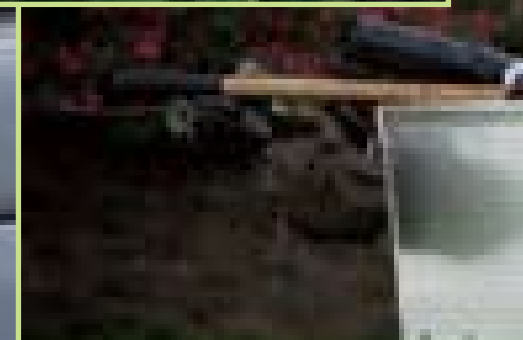
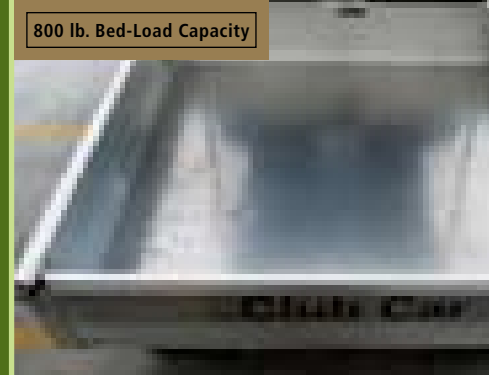
Rustproof Aluminum Frame and Chassis

## BECAUSE 18 HOLES IS JUST THE BEGINNING.

Every day, there are holes to groom, manicure and shape. With challenges like that, you need a functional, reliable turf vehicle. Enter the economical Carryall Turf 2. With a 351cc, 11.5 hp gasoline, pedal-start engine, it's versatile enough to handle a full variety of maintenance tasks, while providing a full 1200 pounds of vehicle capacity.

The Carryall Turf 2. Hole after hole, it's the one to count on.

- All-Aluminum Frame, Chassis and Cargo Box
- 1200 lb. Total Vehicle Load
- 15 mph (Maximum Speed)
- 15.3 cubic feet Cargo Box
- ArmorFlex® Front Body
- Heavy-Duty Front Bumper
- Headlights
- Heavy-Duty Unitized Powertrain
- Differential Guard
- Fuel Meter



Carryall Turf 2





## QUIETLY GOING ABOUT ITS BUSINESS.

Let's face it. You need a vehicle that's all business. One that keeps hauling and keeps you productive all day long.

The Carryall Turf 2 with IQ Plus is all that — and more. Equipped with the new Club Car IQ Plus System, the most advanced DC drive train technology in its class. It puts you in control, giving you the ability to program speeds, motor braking and acceleration. And the Turf 2 with IQ Plus delivers a best-in-class programmable speed between 8 and 17 mph.

Plus, it's so quiet, you can keep working without disturbing golfers.

The Carryall Turf 2 with IQ Plus. Quietly, efficiently and economically going about its business.

- 1200 lb. Total Vehicle Load
- Cargo Box – 15.3 cubic feet
- Headlights
- Tilt Cargo Box with Flip-Down Tailgate
- Molded, Seamless Vinyl Seats
- Self-Adjusting Rack & Pinion Steering
- Heavy-Duty Unitized Powertrain

Carryall Turf 2  
with IQ Plus



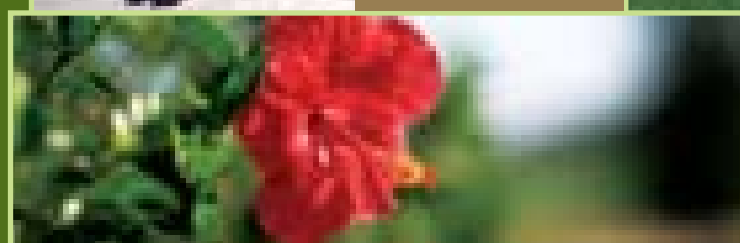
Headlights



ArmorFlex Body



800 lb. Cargo Box Capacity









Dash-Mounted FNR Switch



Nearly 6-ft. Bed



Rustproof Aluminum Frame



## EVERYTHING ABOUT IT SAYS RETURN ON INVESTMENT.

It's not just a vehicle. It's a great investment. That's because the ever-reliable Carryall Turf 6 does all the little things — and all the big things — right. With the Carryall Turf 6 on your side, you've got a powerful, versatile facility maintenance tool. Imagine: a 1500 pound total vehicle capacity and a nearly 6-foot long cargo bed — the biggest payload and cargo space in the Carryall Turf line. And whether you choose the 351cc, 11.5 hp @ 3600 rpm gasoline, pedal-start engine, or go with our exclusive IQ Plus System, you'll always have enough power to handle the challenge.

The Carryall Turf 6. An investment towards your success.

- 16 mph (Maximum Speed)
- 17.1 cubic feet Cargo Box plus 5.2 cubic feet of Lockable Storage
- Molded Fenders
- Cargo Box Bed with Flip-Down Tailgate
- Molded, Seamless Vinyl Seats
- Self-Adjusting Rack & Pinion Steering
- Heavy-Duty Unitized Powertrain
- 1500 lb. Total Vehicle Load





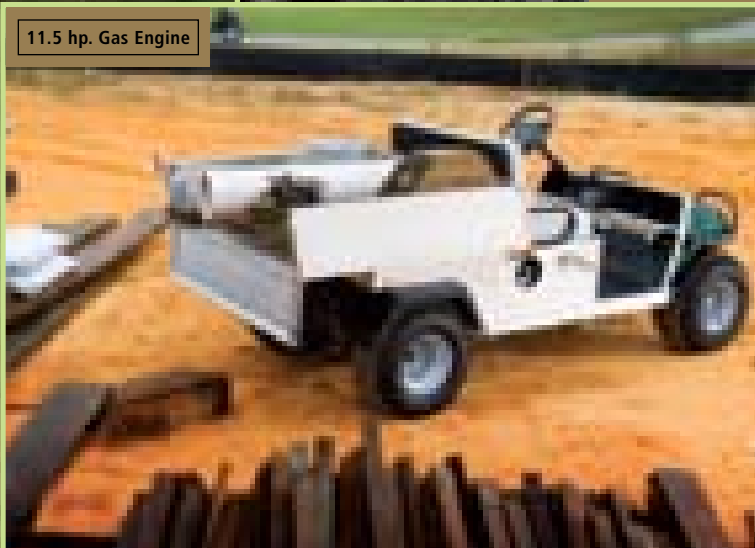
Rustproof Aluminum Frame



All-Terrain Tires



ArmorFlex Body



11.5 hp. Gas Engine

## START EARLY. WORK LATE. IT DOESN'T MIND AT ALL.

Introducing the new Carryall Turf 252 with the exclusive IQ Plus System. Built to excel, it's the go-anywhere, do-anything vehicle that's ready to take charge of your course. With the IQ Plus System, you don't have to plan your day around the life of the battery. The high output charger, controller, onboard computer and battery system give you fast charging — and superior power and range. You can customize top speed, acceleration and motor braking for optimal performance.

If you require a gas vehicle, the Carryall 252 offers an 11.5 hp @ 3600 rpm, 351 cc gas engine to help you handle the tough jobs.

The new Carryall Turf 252 with IQ Plus. More than willing — and able — to put in a little overtime.

- Rugged, Rustproof Aluminum Frame, Chassis and Cargo Box
- Self-Adjusting Rack & Pinion Steering
- ArmorFlex Front Body for Fade-Resistant Color
- Smooth, Independent Leaf-Spring Front/Semi-Independent Rear Suspension with Heavy-Duty Stabilizer Bar
- Trailer Hitch on Rear
- 4-wheel Mechanical Drum Brakes
- Headlights

**NEW!**

Carryall Turf 252  
with IQ Plus







6.6-in. Ground Clearance



13.0 cu.ft. Cargo Box



4-Wheel Hydraulic Brakes

## IT'S LIKE ADDING A WORKAHOLIC TO YOUR STAFF.

The Carryall Turf 272. The mid-duty turf vehicle with high performance features and the ability to work in challenging environments. Add it to your staff, and you'll discover what 'work ethic' really means. With a 400cc, 13 hp @ 3600 rpm gasoline, key-start engine, it gives you the power to get the job done right. And with features like shift-on-the-fly differential lock, 1200 pound load capacity and 6.6 inch ground clearance, it's more than ready to give you an honest day's work.

- 1200 lb. Total Vehicle Load
- 19 mph (Maximum Speed)
- Cargo Box – 13 cubic feet
- Headlights
- Cargo Box Bed with Flip-Down Tailgate
- Molded, Seamless Vinyl Seats
- Trailer Hitch & Front Receiver Hitch
- Heavy-Duty Unitized Powertrain
- Bucket Seats

Carryall Turf 272

# WORKING HARD HAS NEVER BEEN SO EASY.

Need a rugged 4x4 that's easy to operate? Look no further than the Carryall 295. It's the only utility vehicle in its class with the exclusive IntelliTrak™ 4-Wheel-Drive system. No buttons to push. No levers to pull. The IntelliTrak system automatically senses its environment and gives you more power when you need it the most.

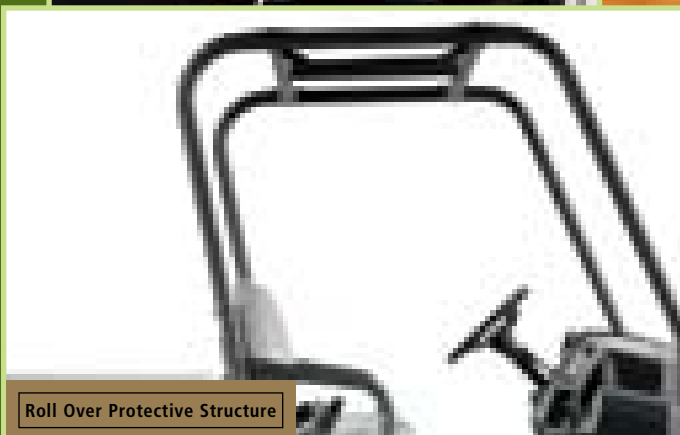
Carryall 295. Making hard work look easy.

- Rustproof, Non-Corrosive, Box Tube 6061 Aircraft-Grade Aluminum Frame, Chassis and Cargo Box
- Choice of Bucket or Bench Seats
- Roll Over Protective Structure Certified to Meet 5 Different International Standards
- Double A-Arm Front Suspension w/Coil-Over Shocks
- 23 hp Air-Cooled Kawasaki® V-Twin or 20 hp Liquid-Cooled Kubota® Diesel Engine
- Choice of 25" Heavy-Duty, All-Terrain (standard) or 25" Heavy-Duty Mud Tires (optional)
- Maximum hp @ 3,600 rpm Exceeds SAE J1940 Performance Standards
- 1200 lb. (544.3 kg) Total Vehicle Capacity; Heavy-Duty 1450 lb. (657.7 kg)

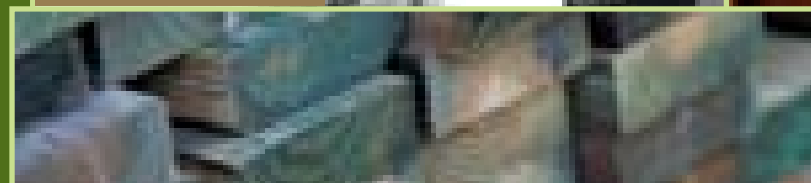


Glove Compartment

IntelliTrak



Roll Over Protective Structure



Carryall 295



## HOW MUCH MORE CAN ONE VEHICLE GIVE YOU?

When the going gets tough, the Carryall 295 SE gets going. It's the 4x4 with more passenger room, featuring four forward-facing seats along with the certified 6-point Roll Over Protective Structure (ROPS) for safety. The Carryall 295 SE comes with the IntelliTrak™ All-Wheel-Drive System, so you'll never have to worry about shifting into 4-wheel drive in rugged environments. IntelliTrak does it automatically by sensing what type of ground you're on.

The Carryall 295 SE. Not just giving you more. Giving you much more.

- 23 hp Air-Cooled Kawasaki® V-Twin or 20 hp Liquid-Cooled Kubota® Diesel Engine
- 15 cubic feet Cargo Box Carries 800 lbs.
- Rustproof, Non-Corrosive, Box Tube 6061 Aircraft-Grade Aluminum Frame, Chassis and Cargo Box
- Choice of Bucket or Bench Seats. Your Choice in Each Row.
- Roll Over Protective Structure Certified to Meet 5 Different International Standards
- Double A-Arm Front Suspension w/Coil-Over Shocks
- 1600 lb. (725.8 kg) Total Vehicle Capacity (800 lbs. in cargo bed, 800 lbs. in seats)

Carryall 295 SE

Adjustable Steering

Rustproof Aluminum Frame

Comfortably Seats 4 Passengers

Club Car



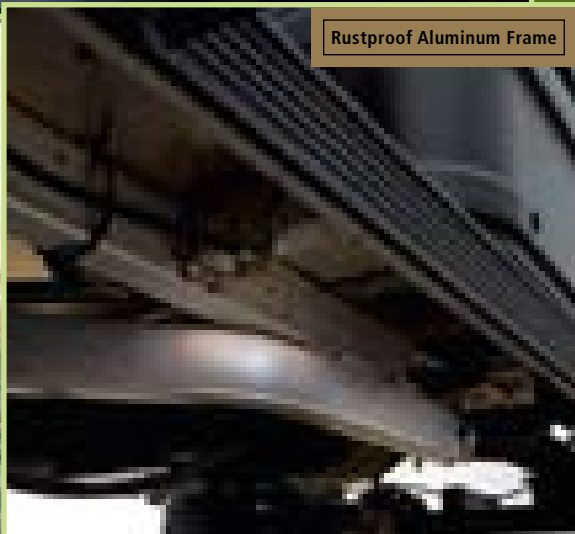




IntelliTach System



800 lb. Cargo Box Capacity



Rustproof Aluminum Frame



## YOU COULD BUY SIX DIFFERENT VEHICLES. OR JUST ONE CARRYALL 295 WITH INTELLITACH.™

It's like having six vehicles in one. The versatile Carryall 295 with IntelliTach is unlike any other 4x4 vehicle on the market.

With its revolutionary IntelliTach quick-change attachment system, you can quickly and easily attach a broom, a set of forks, a bucket, a mower, or a blade. That means you get more work done in less time. And with the easy-to-operate joystick, you get precise maneuverability, allowing you to work more efficiently.

The 6-in-1 Carryall 295 with IntelliTach. Easy to use, reliable and tough — and only from Club Car.

Carryall 295 with IntelliTach features:

- 20 hp Liquid-Cooled Kubota® Diesel Engine
- Rustproof, Non-Corrosive Box Tube 6061 Aircraft-Grade Aluminum Frame, Chassis and Cargo Box
- Roll Over Protective Structure Certified to Meet 5 Different International Standards
- Choice of 25" Heavy-Duty, All-Terrain (standard) or 25" Heavy-Duty Mud Tires (optional)
- Exclusive IntelliTach, the Only Fully Hydraulic, Quick-Changing Tool Attachment System
- 12.1 in (30.7 cm) Ground Clearance Under Foot Platform to Handle Rough Terrain
- Maximum hp @ 3,600 rpm Exceeds SAE J1940 Performance Standards
- 1700 lb. (771.1 kg) Total Vehicle Capacity (800 lbs. in cargo bed, 400 lbs. in seats, 500 lbs. in bucket)

Carryall 295 with IntelliTach

# MORE CHOICES. MO

## 4x2 Options/Accessories\*



Canopy Top



Heavy-Duty  
Front Bumper



Tube Bumper



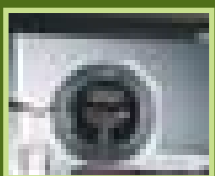
Brush Guard



Driving Range  
Protective Enclosure



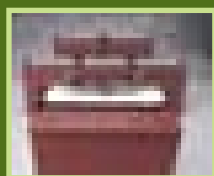
Universal Ball



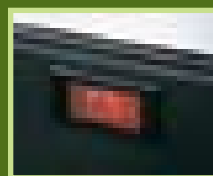
Hour Meter



3.75 hp Motor  
Upgrade



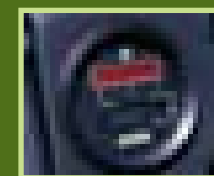
Heavy-Duty  
Batteries



Battery Capacity  
Indicator



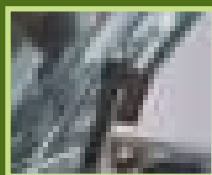
On-Board Charger



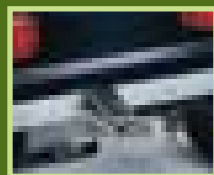
Fuel Gauge/  
Hour Meter



Hydraulic Bed Lift



Electric Bed Lift



Trailer Hitch



2-Inch Front  
Receiver Hitch



2-Inch Rear  
Receiver Hitch



FOPS Top  
(Falling Objects  
Protective Structure)

\*For a complete listing of accessories, please contact your local Club Car dealer.



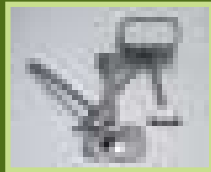
# RE REASONS TO BUY.



**ROPS Cab**  
(Roll Over  
Protective Structure)



**Cab Safety  
Strobe Light**



**Cab Outside  
Mirrors**



**Halogen  
Work Lights**



**Accessory  
Switch-Panel**



**Cab Fan  
Defogger**



**Van Box**



**1,500 lb. Winch**



**2,500 lb. Winch**



**Nerf Bars**



**Light Bar**



**Swisher®  
Dump Cart**



**Wheel Covers**



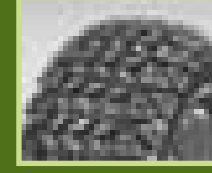
**Premium Tread  
4-Ply or 6-Ply Tires**



**Extra-Traction,  
6-Ply Tires**



**Turf Tires**

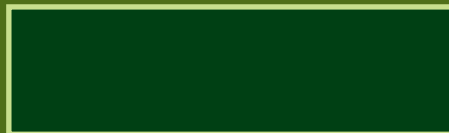


**All-Terrain Tires**



**Mud Tires**

Standard Color



Green

4x2 Specifications

# TAKE A CLOSER LOOK AT Y

	CARRYALL TURF 1		CARRYALL TURF 2	CARRYALL TURF 2 with IQ Plus
Power Source	ELECTRIC	GASOLINE	GASOLINE	ELECTRIC
Engine	N/A	Kawasaki 4-cycle, OHV, 351 cc, single cylinder, air-cooled, pressure-lubricated, spin-on oil filter	Kawasaki 4-cycle, OHV, 351 cc, single cylinder, air-cooled, pressure-lubricated, spin-on oil filter	N/A
Drive Motor	48-volt shunt-wound	N/A	N/A	48-volt shunt/sepex
Horsepower	3.1 @ 2,400 RPM (continuous) 10.0 @ 1,125 RPM (intermittent)	11.5 hp @ 3600 RPM, exceeds SAE J1940 Performance Standards	11.5hp@3600RPM,exceedsSAEJ1940PerformanceStandards	3.7 @ 3,400 RPM (continuous) 21.0 @ 2,000 RPM (peak)
Governed RPM	N/A	3,050±30	3,170±30	N/A
Ignition	N/A	Electronic w/electronic RPM limiter	Electronic w/electronic RPM limiter	N/A
Drive Unit	12.3:1 direct-drive axle, double-reduction helical gear	Unitized trans axle, helical gears: 11.8:1 forward, 17.1:1 reverse	Unitized trans axle, helical gears: 11.8:1 forward, 17.1:1 reverse	12.3:1 direct-drive axle, double-reduction helical gears
Electrical System	48-volt	12-volt, 500 CCA, 105 min. reserve	12-volt, 500 CCA, 105 min. reserve	48-volt
Batteries	Six 8-volt 117 min. @ 56 amp	N/A	N/A	Eight 6-volt, Standard: T105=115 min. @ 75 amps; Heavy-duty: T145=145 min. @ 75 amps
Charger	Automatic 48-volt DC, 17 amp UL and CUL listed	N/A	N/A	Automatic, computer-controlled, 48-volt DC, 17 amp, UL and CUL listed; International CE marked available.
Controller	300 amp solid state	N/A	N/A	500 amp solid state
Key- or Pedal-Start	Pedal	Pedal	Pedal	Pedal
Steering	Self-adjusting rack & pinion	Self-adjusting rack & pinion	Self-adjusting rack & pinion	Self-adjusting rack & pinion
Front Suspension	Independent leaf springs w/dual hydraulic shocks	Independent leaf springs w/dual hydraulic shocks	Independent leaf springs w/dual hydraulic shocks	Independent leaf springs w/dual hydraulic shocks
Brakes	Self-adjusting rear mechanical drum	Self-adjusting rear mechanical drum	Rear-wheel mechanical drum	4-wheel mechanical drum
Park Brake	Foot-operated, multi-lock	Foot-operated, multi-lock	Foot-operated, multi-lock	Foot-operated, multi-lock
Stabilizer Bar	No	No	Yes	No
Frame/Chassis	Aluminum I-Beam	Aluminum I-Beam	Aluminum I-Beam	Aluminum I-Beam
Front Body	ArmorFlex®	ArmorFlex	ArmorFlex	ArmorFlex
Rear Body	All aluminum	All aluminum	All aluminum	All aluminum
Body Finish	Matching paint over molded-in color	Matching paint over molded-in color	Matching paint over molded-in color	Matching paint over molded-in color
Light Package	Optional	Optional	Optional	Optional
Trailer Hitch	Optional	Optional	Standard	Standard
Front Tires	18 x 8.50-8, 4-ply rated, premium tread	18 x 8.50-8, 4-ply rated, premium tread	18 x 8.50-8, 6-ply rated, premium tread	18 x 8.50-8, 6-ply rated, premium tread
Rear Tires	18 x 8.50-8, 4-ply rated, premium tread	18 x 8.50-8, 4-ply rated, premium tread	18 x 8.50-8, 6-ply rated, extra-traction tread	18 x 8.50-8, 6-ply rated, extra-traction tread
Instrumentation	Battery warning light	Electronic fuel gauge/hour meter, low-oil warning light	Electronic fuel gauge/hour meter, low-oil warning light	Battery warning light
Cargo Box Size	37.6 x 45.1 x 9.3 in (9.1 ft³) (95.5 x 114.6 x 23.5 cm)	37.6 x 45.1 x 9.3 in (9.1 ft³) (95.5 x 114.6 x 23.6 cm)	48.8 x 49.8 x 10.9 in (15.3 ft³) (123.8 x 126.4 x 27.6 cm)	48.8 x 49.8 x 10.9 in (15.3 ft³) (123.8 x 126.4 x 27.6 cm)
Bed Load Height	27.5 in (69.9 cm)	27.5 in (69.9 cm)	27.5 in (69.9 cm)	27.5 in (69.9 cm)
Bed Load Capacity	300 lb (272.4 kg)	300 lb (272.4 kg)	800 lb (363.2 kg)	800 lb (363.2 kg)
Overall LxWxH	103.5 x 48.0 x 48.0 in (262.9 x 121.9 x 121.9 cm)	103.5 x 48.0 x 48.0 in (262.9 x 121.9 x 121.9 cm)	111.0 x 50.0 x 48.0 in (281.9 x 127.0 x 121.9 cm)	111.0 x 50.0 x 48.0 in (281.9 x 127.0 x 121.9 cm)
Wheelbase	65.5 in (166.4 cm)	65.5 in (166.4 cm)	77.5 in (196.9 cm)	77.5 in (196.9 cm)
Differential Ground Clearance	4.5 in (11.4 cm)	4.5 in (11.4 cm)	4.5 in (11.4 cm)	4.5 in (11.4 cm)
Fuel Tank Capacity	N/A	7.0 gal (26.5 L)	7.0 gal (26.6 L)	N/A
Tread	34.5/38.5 in (87.6/97.8 cm)	34.5/38.5 in (87.6/97.8 cm)	34.5/38.5 in (87.6/97.8 cm)	34.5/38.5 in (87.6/97.8 cm)
Dry Weight — Less Batteries	530 lb (240.6 kg)	658 lb (298.7 kg)	724 lb (328.7 kg)	612 lb (277.8 kg)
Speed Range	12-15 mph (19.3-24.1 kph)	12-15 mph (19.3-24.1 kph)	14-16 mph (22.5-25.7 kph)	5-17 mph (8-27.3 kph)
Outside Clearance Circle	17.5 ft (5.3 m) dia.	17.5 ft (5.3 m) dia.	20.7 ft (6.3 m) dia.	20.7 ft (6.3 m) dia.
Turning Radius	8.4 ft (2.6 m)	8.4 ft (2.6 m)	10.0 ft (3.0 m)	10.0 ft (3.0 m)
Intersecting Aisle Radius	72.0 in (182.9 cm)	72.0 in (182.9 cm)	77.0 in (195.6 cm)	77.0 in (195.6 cm)
Vehicle Warranty	2-year, limited/4-year batteries*	2-year, limited*	2-year, limited*	2-year, limited/4-year batteries*

\*There are no warranties, expressed or implied, contained herein. See Limited Warranty found in the owner’s manual or write to Club Car, Inc. The company reserves the right to make design changes without obligation to make these changes on units or systems previously sold.

# OUR NEXT TURF UTILITY VEHICLE.

	CARRYALL TURF 6	CARRYALL TURF 252	CARRYALL TURF 252 with IQ Plus	CARRYALL TURF 272
Power Source	GASOLINE	GASOLINE	ELECTRIC	GASOLINE
Engine	Kawasaki 4-cycle, OHV, 351 cc, single cylinder, air-cooled, pressure-lubricated, spin-on oil filter	Kawasaki 4-cycle, OHV, 286 cc, single cylinder, air-cooled, pressure-lubricated, spin-on oil filter	N/A	Kawasaki 4-cycle, OHV, 400 cc, single cylinder, air-cooled, pressure-lubricated, spin-on oil filter
Drive Motor	N/A	N/A	48-volt shunt/sepex	N/A
Horsepower	11.5 hp @ 3600 RPM, exceeds SAE J1940 Performance Standards	11.5 hp @ 3600 RPM, exceeds SAE J1940 Performance Standards	3.7 @ 3,400 RPM (continuous) 21.0 @ 2,000 RPM (peak)	13 hp @ 3600 RPM, exceeds SAE J1940 Performance Standards
Governed RPM	3,050±30	2,900±30	N/A	3,800±30
Ignition	Electronic w/electronic RPM limiter	Electronic w/electronic RPM limiter	N/A	Electronic w/electronic RPM limiter
Drive Unit	Unitized transaxle, helical gears: 11.8:1 forward, 17.1:1 reverse	Unitized transaxle, helical gears: 11.8:1 forward, 17.1:1 reverse	12.3:1 direct-drive axle, double-reduction helical gears	Unitized transaxle, helical gears: 15.0:1 forward, 20.6:1 reverse
Electrical System	12-volt, 500 CCA, 105 min. reserve	12-volt, 500 CCA, 105 min. reserve	48-volt	12-volt, 500 CCA, 105 min. reserve
Batteries	N/A	N/A	Eight 6-volt, Standard: T105=115 min. @ 75 amps; Heavy-duty: T145=145 min. @ 75 amps	N/A
Charger	N/A	N/A	Automatic, computer-controlled, 48-volt DC, 17 amp, UL and CUL listed; International CE marked available.	N/A
Controller	N/A	N/A	500 amp solid state	N/A
Key- or Pedal-Start	Key	Pedal	N/A	Key
Steering	Self-adjusting rack & pinion	Self-adjusting rack & pinion	Self-adjusting rack & pinion	Self-adjusting rack & pinion
Front Suspension	Independent leaf springs w/dual hydraulic shocks	Multi-leaf springs w/dual hydraulic shocks	Independent leaf springs w/dual hydraulic shocks	Independent A-arms w/coil-over shocks
Brakes	4-wheel, mechanical drum	Rear-wheel, mechanical drum	Four-wheel, mechanical drum	Self-adjusting, dual-circuit, 4-wheel, hydraulic drum
Park Brake	Foot-operated, multi-lock	Foot-operated, multi-lock	Foot-operated, multi-lock	Hand-operated, multi-lock
Stabilizer Bar	Yes	No	Yes	No
Frame/Chassis	Aluminum I-Beam	Aluminum I-Beam	Aluminum I-Beam	Aluminum I-Beam
Front Body	ArmorFlex	ArmorFlex	ArmorFlex	ABS/DR acrylic laminate
Rear Body	All aluminum	All aluminum	All aluminum	N/A
Body Finish	Matching paint over molded-in color	Matching paint over molded-in color	Matching paint over molded-in color	ABS/DR acrylic
Light Package	Optional	Optional	Headlights only package	Headlights only package
Trailer Hitch	Standard	Optional	Standard	Front and rear receiver
Front Tires	18 x 6.50-8, 6-ply rated, premium tread	23 x 10.50-12, 4-ply rated, all-terrain tread	22 x 11.00-10, 6-ply rated, heavy-duty, all-terrain tread	23 x 10.50-12, 4-ply rated, all-terrain tread
Rear Tires	18 x 8.50-8, 6-ply rated, premium tread	23 x 10.50-12, 4-ply rated, all-terrain tread	22 x 11.00-10, 6-ply rated, heavy-duty, all-terrain tread	23 x 10.50-12, 4-ply rated, all-terrain tread
Instrumentation	Electronic fuel gauge/hour meter, low-oil warning light	Electronic fuel gauge/hour meter, low-oil warning light	Battery warning light	to come...
Cargo Box Size	70.5 x 45.1 x 9.3 in (17.1 ft³) (179.1 x 114.6 x 23.5 cm)	37.6 x 45.1 x 9.3 in (9.1 ft³) (95.5 x 114.6 x 23.6 cm)	48.4 x 49.8 x 10.9 in (123.8 x 126.4 x 27.6 cm)	48.8 x 49.8 x 9.3 in (13 ft³) (123.8 x 126.5 x 23.5 cm)
Bed Load Height	27.0 in (68.6 cm)	29.8 in. (75.6 cm)	29.8 in. (75.6 cm)	31.1 in (79.0 cm)
Bed Load Capacity	1,000 lb (499.4 kg)	500 lb (226.8 kg)	500 lb (226.8 kg)	800 lb (362.9 kg)
Overall LxWxH	134.0 x 49.3 x 48.0 in (340.4 x 125.2 x 121.9 cm)	120.4 x 51.3 x 51.1 in (305.8 x 130.2 x 129.8 cm)	120.4 x 51.3 x 51.1 in (305.8 x 130.2 x 129.8 cm)	120.0 x 54.0 x 51.0 in (304.8 x 137.2 x 129.5 cm)
Wheelbase	98.5 in (250.2 cm)	78.5 in (199.4 cm)	78.5 in (199.4 cm)	80.0 in (203.2 cm)
Differential Ground Clearance	4.5 in (11.4 cm)	6.4 in (16.3 cm)	6.4 in (16.3 cm)	6.6 in (16.8 cm)
Fuel Tank Capacity	7.0 gal (26.6 L)	7.0 gal (26.5 L)	N/A	7.0 gal (26.5 L)
Tread	34.5/38.5 in (87.6/97.8 cm)	36.5/41.3 in (92.7/104.8 cm)	36.5/41.3 in (92.7/104.8 cm)	43/43.5 in (109.2/110.5 cm)
Dry Weight — Less Batteries	868 lb (394 kg)	910 lb (412.8 kg)	900 lb (412.8 kg)	1,022 lb (463.6 kg)
Speed Range	14-16 mph (22.5-25.7 kph)	15-17 mph (24.1-27.4 kph)	15-17 mph (24.1-27.4 kph)	17-19 mph (27.4-30.6 kph)
Outside Clearance Circle	24.7 ft (7.5 m) dia.	21.7 ft (6.6 m) dia.	21.7 ft (6.6 m) dia.	23.3 ft (7.1 m) dia.
Turning Radius	12.0 ft (3.7 m)	10.8 ft (3.3 m)	10.8 ft (3.3 m)	11.8 ft (3.6 m)
Intersecting Aisle Radius	90.0 in (228.6 cm)	77.0 in (195.6 cm)	77.0 in (195/6 cm)	90.0 in (228.6 cm)
Vehicle Warranty	2-year, limited*	2-year, limited*	2-year, limited*	2-year, limited*

\*There are no warranties, expressed or implied, contained herein. See Limited Warranty found in the owner's manual or write to Club Car, Inc. The company reserves the right to make design changes without obligation to make these changes on units or systems previously sold.

4x4 Options/Accessories\*

# TOOLS OF THE TRADE.



**Lighting Package**  
(Includes horn, turn signals and brakelights)



**Plastic Canopy Top**



**Custom Van Box**



**Rear Cargo Cage**



**Electric Bed Lift**



**Underhood Storage**  
(Gas Only)



**Stake-Side Kit**



**2-Inch Front Receiver Hitch**



**Cargo Bed Toolbox**



**2,500 lb. Warn Winch**



**Pintle Hitch**



**Nerf Bars**



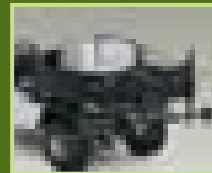
**54- or 62-Inch Plow Blade**



**Swisher Trailmower**



**Swisher Dump Cart**



**50-Gallon Sprayer**



**Cab Heater**  
(Gas Only)

\*For a complete listing of accessories, please contact your local Club Car dealer.

Standard Color



**Green**

	CARRYALL 295		CARRYALL 295 SE		CARRYALL 295 with IntelliTach
Power Source	DIESEL	GASOLINE	DIESEL	GASOLINE	DIESEL
Engine	Kubota, 4-cycle OHV, 719 cc, 3-cylinder	Kawasaki, 4-cycle OHV, 675 cc, 2-cylinder	Kubota, 4-cycle OHV, 719 cc, 3-cylinder	Kawasaki, 4-cycle OHV, 675 cc, 2-cylinder	Kubota, 4-cycle OHV, 719 cc, 3-cylinder
Engine — Cooling	Liquid	Air	Liquid	Air	Liquid
Engine — Lubrication & Oil Filter Type	Full-pressure, spin-on	Full-pressure, spin-on	Full-pressure, spin-on	Full-pressure, spin-on	Full-pressure, spin-on
Max Torque	33 ft-lb (44.7 Nm)	39.8 ft-lb @ 2400 rpm	33 ft-lb (44.7 Nm)	39.8 ft-lb @ 2400 rpm	33 ft-lb (44.7 Nm)
Horsepower	20 hp (14.9 kw)	23 hp (14.9 kw)	20 hp (14.9 kw)	23 hp (14.9 kw)	20 hp (14.9 kw)
Ignition	Compression	Transistorized magneto	Compression	Transistorized magneto	Compression
4WD Engagement	Automatic - IntelliTrak	Automatic - IntelliTrak	Automatic - IntelliTrak	Automatic - IntelliTrak	Automatic - IntelliTrak
Differential — Front	Automatic - IntelliTrak	Automatic - IntelliTrak	Automatic - IntelliTrak	Automatic - IntelliTrak	Automatic - IntelliTrak
Differential — Rear	Auto locking - IntelliTrak	Auto locking - IntelliTrak	Auto locking - IntelliTrak	Auto locking - IntelliTrak	Auto locking - IntelliTrak
Torque Converter	CVT	CVT	CVT	CVT	CVT
Electrical System	12-volt, 500 CCA	12-volt, 500 CCA	12-volt, 500 CCA	12-volt, 500 CCA	12-volt, 500 CCA
Steering	Rack & pinion	Rack & pinion	Rack & pinion	Rack & pinion	Rack & pinion
Seating	Choice of bucket or bench; adjustable driver's seat only available with bucket seat option	Choice of bucket or bench; adjustable driver's seat only available with bucket seat option	Choice of bucket or bench; adjustable driver's seat only available with bucket seat option	Choice of bucket or bench; adjustable driver's seat only available with bucket seat option	Standard
Front Suspension	IndependentdoubleA-armsw/coil-overshocks	IndependentdoubleA-armsw/coil-overshocks	IndependentdoubleA-armsw/coil-overshocks	IndependentdoubleA-armsw/coil-overshocks	IndependentdoubleA-armsw/coil-overshocks
Rear Suspension	Swing arm w/coil-over shocks	Swing arm w/coil-over shocks	Swing arm w/coil-over shocks	Swing arm w/coil-over shocks	Swing arm w/coil-over shocks
Brakes	Four-wheel, hydraulic disc	Four-wheel, hydraulic disc	Four-wheel, hydraulic disc	Four-wheel, hydraulic disc	Four-wheel, hydraulic disc
Park Brake	Automotive style	Automotive style	Automotive style	Automotive style	Automotive style
Frame Chassis	Tubular aluminum	Tubular aluminum	Tubular aluminum	Tubular aluminum	Tubular aluminum
Body — Front	GEGeloyhigh-impact,scratch-resistant,injection molded color	GEGeloyhigh-impact,scratch-resistant,injection molded color	GEGeloyhigh-impact,scratch-resistant,injection molded color	GEGeloyhigh-impact,scratch-resistant,injection molded color	GEGeloyhigh-impact,scratch-resistant,injection molded color
Body — Rear	All aluminum cargo bed	All aluminum cargo bed	All aluminum cargo bed	All aluminum cargo bed	All aluminum cargo bed
Tires — Front	All-terrain, 25 x 10.5-12, 4-ply (mud tires optional)	All-terrain, 25 x 10.5-12, 4-ply (mud tires optional)	All-terrain, 25 x 10.5-12, 4-ply (mud tires optional)	All-terrain, 25 x 10.5-12, 4-ply (mud tires optional)	All-terrain, 25 x 10.5-12, 4-ply (mud tires optional)
Tires — Rear	All-terrain, 25 x 10.5-12, 4-ply (mud tires optional)	All-terrain, 25 x 10.5-12, 4-ply (mud tires optional)	All-terrain, 25 x 10.5-12, 4-ply (mud tires optional)	All-terrain, 25 x 10.5-12, 4-ply (mud tires optional)	All-terrain, 25 x 10.5-12, 4-ply (mud tires optional)
Instrumentation	Electronicfuelgauge/hourmeter,lowoilwarning light, coolant high temp warning light, (speedometer optional)	Electronicfuelgauge/hourmeter,lowoilwarning light, (speedometer optional)	Electronicfuelgauge/hourmeter,lowoilwarning light, coolant high temp warning light, (speedometer optional)	Electronicfuelgauge/hourmeter,lowoilwarning light, (speedometer optional)	Electronic fuel gauge/hour meter, seatbelt warninglight,lowoilwarninglight,coolanhigh temp warning light, (speedometer optional)
Flat Bed Size	48.8" x 49.8" x 10.9" (124 x 126.5 x 27.7 cm)	48.8" x 49.8" x 10.9" (124 x 126.5 x 27.7 cm)	48.8" x 49.8" x 10.9" (124 x 126.5 x 27.7 cm)	48.8" x 49.8" x 10.9" (124 x 126.5 x 27.7 cm)	48.8" x 49.8" x 10.9" (124 x 126.5 x 27.7 cm)
Bed Load Height	33" (83.8 cm)	33" (83.8 cm)	33" (83.8 cm)	33" (83.8 cm)	33" (83.8 cm)
Bed Load Capacity	800 lb (362 kg); 1050 lb (476.3 kg) available	800 lb (362 kg); 1050 lb (476.3 kg) available	800 lb (362 kg)	800 lb (362 kg)	800 lb (362 kg)
Total Vehicle Capacity	1,200 lb (544.3 kg); 1450 lb (657.7 kg) available	1,200 lb (544.3 kg); 1450 lb (657.7 kg) available	1,600 lb (725.7 kg)	1,600 lb (725.7 kg)	1,700 lb (771.1 kg)
Overall Length	124.6" (316.5 cm)	124.6" (316.5 cm)	157.6" (400.3 cm)	157.6" (400.3 cm)	148.6" (377.4 cm)
Overall Width	60" (152.4 cm)	60" (152.4 cm)	60" (152.4 cm)	60" (152.4 cm)	60" (152.4 cm)
Overall Height	78.6" (199.6 cm)	78.6" ( 199.6 cm)	78.6" (199.6 cm)	78.6" (199.6 cm)	78.6" (199.6 cm)
Wheelbase	81.5" (207 cm)	81.5" (207 cm)	114" (289.6 cm)	114" (289.6 cm)	81.5" (207 cm)
Ground Clearance	7.4" (18.8 cm)	7.4" (18.8 cm)	7.4" (18.8 cm)	7.4" (18.8 cm)	7.4" (18.8 cm)
Fuel Tank Capacity	6.5 gal (24.6 L)	6.5 gal (24.6 L)	6.5 gal (24.6 L)	6.5 gal (24.6 L)	6.5 gal (24.6 L)
Tread	48.8" (124 cm) front and rear	48.8" (124 cm) front and rear	48.8" (124 cm) front and rear	48.8" (124 cm) front and rear	48.8" (124 cm) front and rear
Dry Weight — Less Batteries	1,559 lb (707.2 kg)	1,430 lb (648.6 kg)	1,786 lb (810.1 kg)	1,605 lb (728 kg)	1,764 lb (800.1 kg)
Maximum Speed	25 mph (40.2 kph)	25 mph (40.2 kph)	25 mph (40.2 kph)	25 mph (40.2 kph)	25 mph (40 kph)
Turning Radius	11.5 ft (3.5 m)	11.5 ft (3.5 m)	17.0 ft (5.2 m)	17.0 ft (5.2 m)	11.5 ft (3.5 m)
Vehicle Warranty	2-year/2,000-hour, limited*	2-year/2,000-hour, limited*	2-year/2,000-hour, limited*	2-year/2,000-hour, limited*	2-year/2,000-hour, limited*

\*There are no warranties, expressed or implied, contained herein. See Limited Warranty found in the owner's manual or write to Club Car, Inc. The company reserves the right to make design changes without obligation to make these changes on units or systems previously sold.

# HELPING YOU SUCCEED. ONE SOLUTION AT A TIME.

## Golf Cars

The leadership of Club Car. Nowhere is it more apparent than in our latest line of golf cars. From the technological advancements and rich, good looks of the Precedent to the legendary DS Player, we set the standard for the industry. With advanced features like hand-held diagnostics, the industry's first 4-battery, 48-volt power plant, and the breakthrough IQ UpLink™ asset protection and management tool, Club Car golf cars deliver style, performance and advanced technologies to your course.

## Ingersoll Rand Financial Services

Trust Ingersoll Rand Financial Services to provide unmatched expertise — and customized solutions — to meet your financing and leasing needs.

## Mobile Merchandising Vehicles

More choices. More revenue. More profits. That's what you'll discover when you choose a Mobile Merchandising vehicle from Club Car. We understand you want to leave a positive impression on your customers. We also understand that food and beverage vehicles can help you reach your full profit potential. Talk to us about the competitive edge you'll get from our full range of Mobile Merchandising solutions.

## Genuine Club Car Parts, Accessories & Service

Every Club Car vehicle is the sum of its quality parts. To maximize the value of your vehicle — and to keep it properly maintained — it pays to use Genuine Club Car Parts and Accessories. All Genuine Club Car Parts and Accessories are precision-crafted to our strict specifications, and are the same as your vehicle's original components.

## Transportation Vehicles

Keeping customers happy and comfortable is the sign of a good host. That's why so many golf operations choose Club Car Transportation Vehicles. With Club Car, you're assured of an efficient, dependable Transportation Vehicle with the power and capability to handle any job. And you'll be transporting your guests in style and comfort. Our full line includes 4, 6 and 8-passenger vehicles, all with plenty of cargo room. It pays to enhance your image — and ensure customer satisfaction — with the help of Club Car.

## Custom Solutions

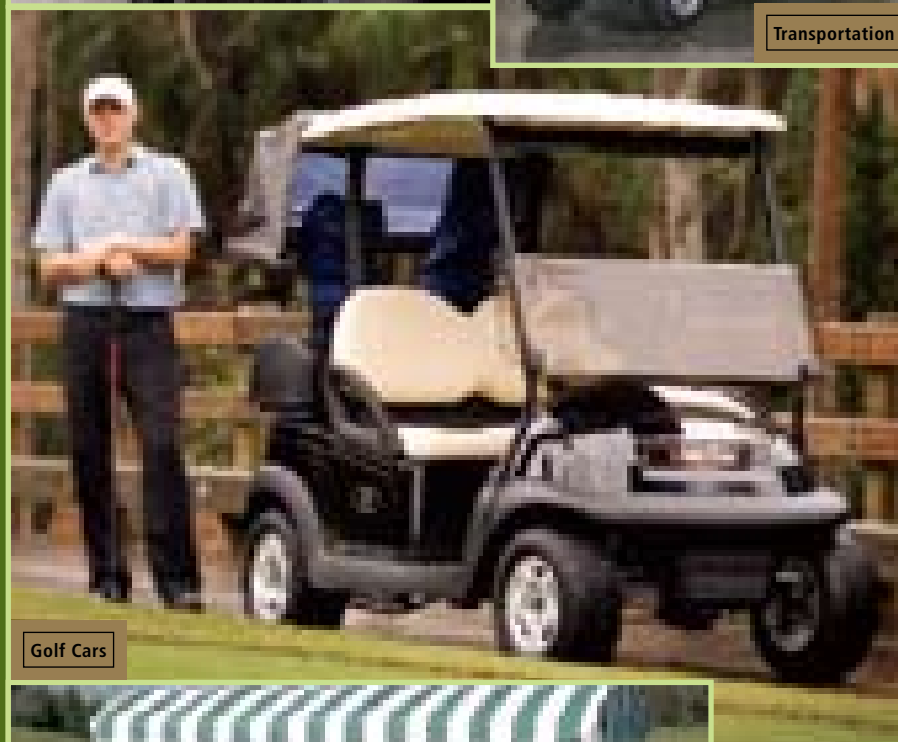
Our Custom Solutions department tailors vehicles for all types of customer applications every day. Numerous offerings are currently available. If you have a specific request, ask your dealer about making your next Club Car a Custom Solution. If you can imagine it, our Custom Solutions professionals can build it.

## Optional IQ UpLink System

Our exclusive IQ System is integrated with the UpLink® Course Management System to create a breakthrough asset protection and management tool.



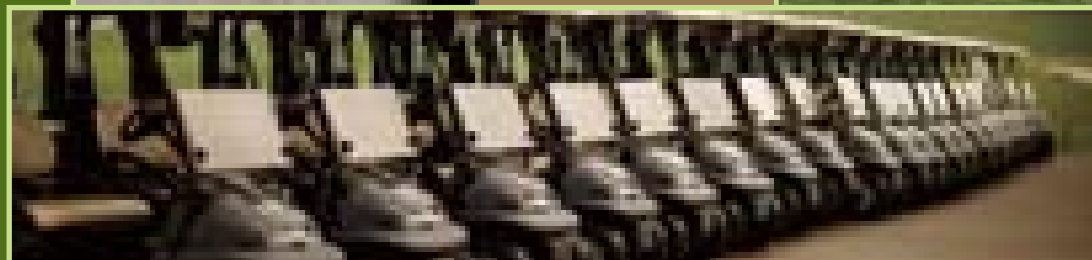
Transportation Vehicles



Golf Cars



Mobile Merchandising Vehicles







Ingersoll Rand is a world leader in the field of compact vehicles and equipment. Our widely known Bobcat® brand includes an extensive line of powerful, nimble compact construction equipment and attachments, and our state-of-the-art engineering capabilities and stylish designs are reflected in our world famous Club Car® vehicles.

1.800.CLUBCAR • +1 706.863.3000

[www.clubcar.com](http://www.clubcar.com) [www.ingersollrand.com](http://www.ingersollrand.com)

CCN 58648767 01/07